

Stonehouse Station Update

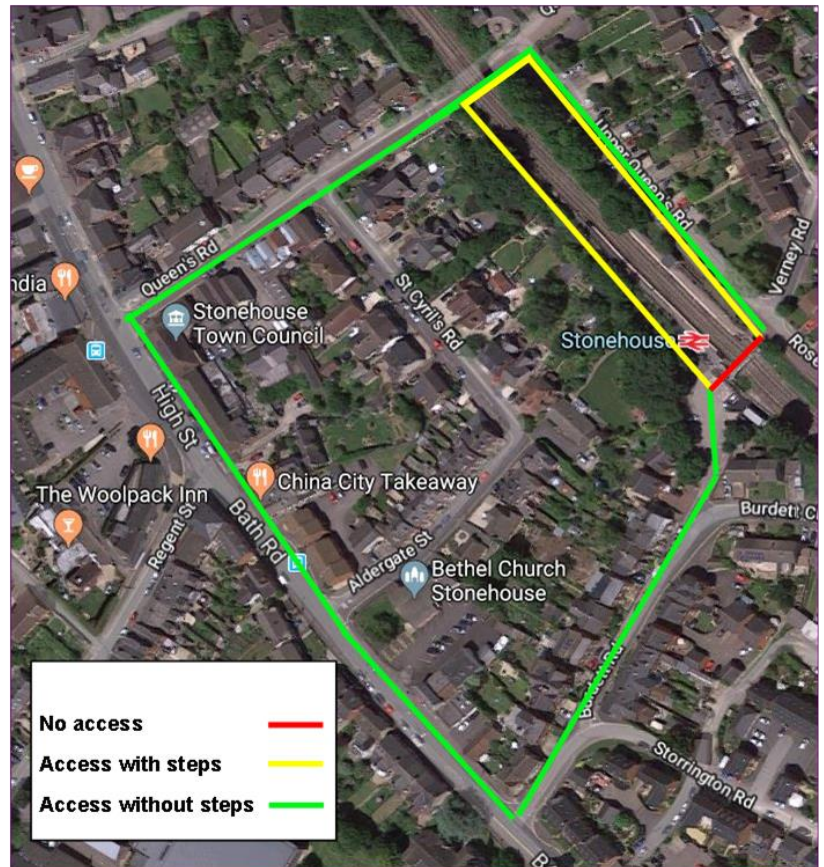
Footbridge diversion

As part of our upgrade of Stonehouse station, we need to temporarily remove the footbridge on Saturday 17 March, 2018.

It will be modified off-site to tie in with the platform extensions, which will serve newer trains.

We expect to reinstall the footbridge by mid-June 2018. Please see the map for alternative walking routes and leave extra time to catch your train.

Please note we need to close the station car park from 21.00 on 16 March to 21.00 on 17 March in order to safely remove the footbridge. Thank you for your patience while we carry out this essential work.



Upgrading your station

The platform extensions are due to be in use by the end of May 2018, ready for newer, longer, modified diesel trains. A fleet of Class 16x Turbo trains is arriving from the Thames Valley area to increase the capacity of the network and meet the growing demand for rail travel.

Benefits of these trains include more space for passengers; access-for-all toilets; improved reliability; at-seat power sockets and free Wi-Fi.

We're also working on the track and other infrastructure to ensure a clear route for these newer trains.

The station will remain open during normal operating hours for the majority of the work.

Service alterations

Services to and through Stonehouse will be affected on the following dates, due to work at the station and/or work on the electrification of the line between Swindon and Didcot Parkway. During these weekends, no train service will be able to call at Swindon.

01.15 Saturday 17 - 05.20 Monday 19 March
 01.15 Saturday 24 - 05.20 Monday 26 March
 01.15 Saturday 14 - 05.20 Monday 16 April
 01.00 Saturday 26 - 0500 Tuesday 29 May

Train services may be altered or replaced by buses. Please plan ahead before you travel at www.gwr.com/travel-updates/planned-engineering